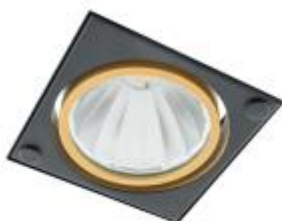
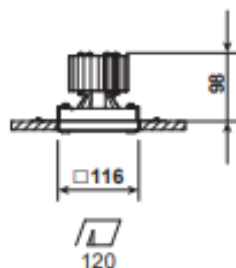


UNO TRIMLESS SLM



Please see the attached pages for detailed specifications.



Mounting:	Recessed
Body material:	Steel & Aluminium
Colour:	Grey RAL9006/Black RAL9005
LED module:	First brand LED module
Colour temperature:	2700k/3000k/4000k
Colour Rendering Index (CRI):	>80 or >90 in standard
Driver:	First brand driver
Emergency unit:	Yes
Movement sensor:	Available on request
Daylight control sensor:	Available on request
Operating temperature range:	0°C to +40°C
IP Class:	IP20
Power:	220-240V 50/60Hz
Lighting direction:	Direct
Reflector type:	Aluminium glossy
Light distribution:	Symmetric
Diffuser:	Clear or frosted glass on Request
General data:	5 Years standard warranty, possible extension with project registration Different lumen output or wattage available on request All other technical features such as : Luminaire Eicacy, LOR, Lumen maintenance L/B etc. available in our pricelist Wattage of products may vary due to constant LED eicacy improvements. Luminous lux & Luminaire Power tolerance +/- 10%. System power consumption (LED module & driver) depends on components used