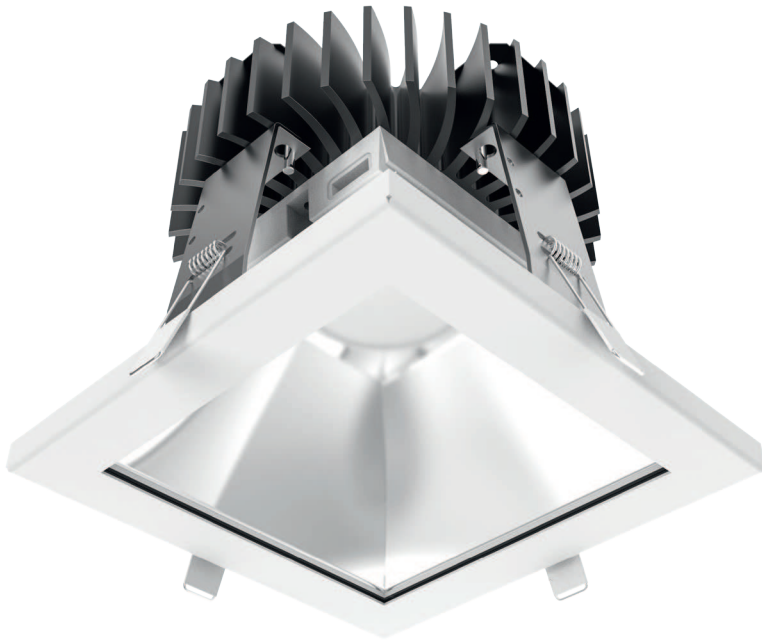


DLK 170 IP54



Recessed IP65 LED downlight for installation in suspended ceilings.

Mounting:	Ceiling recessed, mounting brackets included
Body material:	Aluminium and steel
Colour:	Standard Gray 9006, other RAL colours on request (please add RAL code after index number)
LED module:	Philips / Osram or Tridonic LED module included
Colour temperature:	3000K or 4000K
Colour Rendering Index (CRI)	>80 in standard other on request
Driver:	Electronic driver or electronic integrated in standard, DALI on request
Emergency unit:	On request
Movement sensor:	N/A
Daylight control sensor:	N/A
Operating temperature range:	- 20°C ... +40°C
IP Class:	IP54
Power:	220-240V 50/60Hz
Lighting direction:	Direct lighting
Reflector type:	Aluminium glossy
Light distribution:	Symmetric
Diffuser:	Clear glass in standard, frosted on request
General data:	5 Years standard warranty

Different lumen output or wattage available on request

All other technical features such as : Luminaire Efficacy, LOR, Lumen maintenance L/B etc. available in our pricelist

Wattage of products may vary due to constant LED efficacy improvements. Luminous flux & Luminaire Power tolerance +/- 10%.

System power consumption (LED module & driver) depends on components used



Index no.	Lumen output [lm]	Power [W]	Colour temp. [K]	CRI	Lifetime [H]	Warranty [Years]	MacAdam [SDCM]	Weight [kg]
With integrated AC driver								
6528.1100/830	1100	10	3000	Ra > 80	50.000	5	3	2,30
6528.1100/840	1100	10	4000	Ra > 80	50.000	5	3	2,30
6528.2000/830	2000	18	3000	Ra > 80	50.000	5	3	2,30
6528.2000/840	2000	18	4000	Ra > 80	50.000	5	3	2,30
With AC/DC driver								
6616.1100/830	1100	12	3000	Ra > 80	50.000	5	3	2,60
6616.1100/840	1100	12	4000	Ra > 80	50.000	5	3	2,60
6616.2000/830	2000	20	3000	Ra > 80	50.000	5	3	2,60
6616.2000/840	2000	20	4000	Ra > 80	50.000	5	3	2,60

