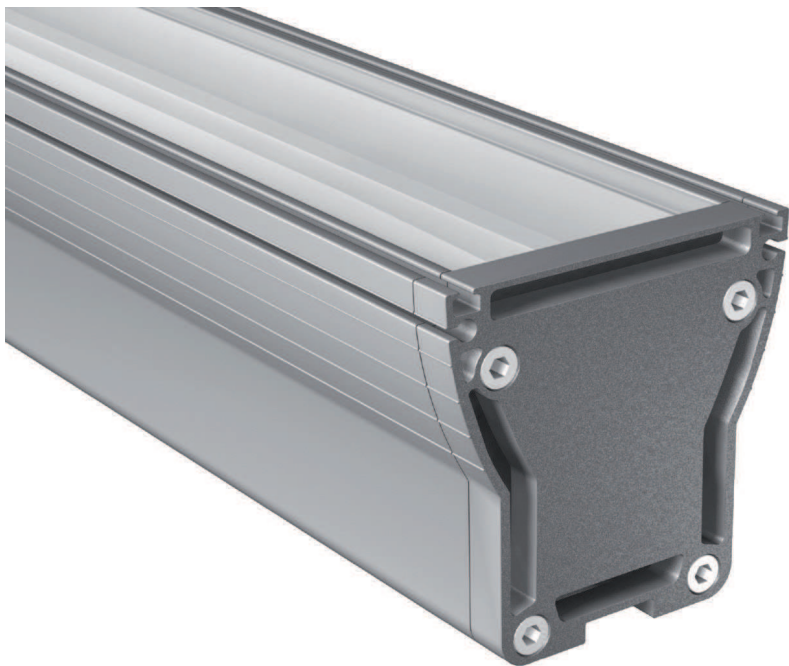


SLIM LED 1



Ground mounted IP67 LED luminaire.

Mounting:	On the ground
Body material:	Aluminium and stainless steel
Colour:	Standard Anthracite grey 7016, other RAL colours on request (please add RAL code after index number)
LED module:	Philips / Osram or Tridonic LED module included
Colour temperature:	4000K
Colour Rendering Index (CRI)	>80 in standard
Driver:	Electronic driver
Emergency unit:	N/A
Movement sensor:	N/A
Daylight control sensor:	N/A
Operating temperature range:	-20°C ... +40°C
IP Class:	IP67
Power:	220-240V 50/60Hz
Lighting direction:	Direct lighting
Reflector type:	Integrated lenses
Light distribution:	Symmetric
Diffuser:	Clear tempered glass in standard, mat on request
General data:	5 Years standard warranty

All other technical features such as : Luminaire Efficacy, LOR, Lumen maintenance L/B etc. available in our pricelist

Wattage of products may vary due to constant LED efficacy improvements. Luminous flux & Luminaire Power tolerance +/- 10%.

System power consumption (LED module & driver) depends on components used



Index no.	Lumen output [lm]	Power [W]	Colour temp. [K]	Number of diodes	Lifetime [H]	Warranty [Years]	Length [mm]
3487.9	880	11	4000	9	50000	3	341 mm
3487.18	1760	22	4000	18	50000	3	602 mm
3487.28	2720	34	4000	28	50000	3	902 mm
3487.38	3680	46	4000	38	50000	3	1202 mm
3487.48	4640	58	4000	48	50000	3	1502 mm

